

Módulo AEE3101  
BASE  
Display + Fonte

Módulo AEE3401  
CPLD XC9536XL

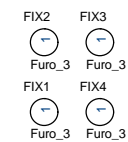
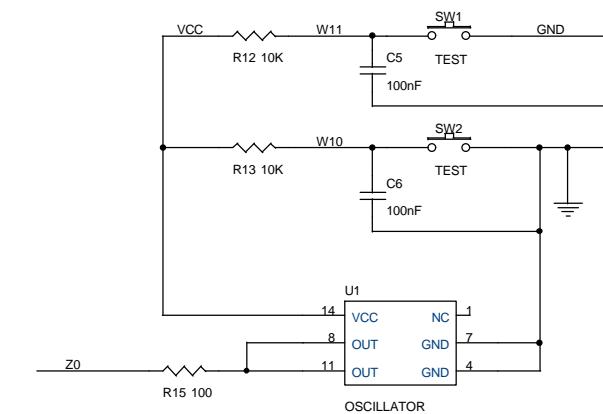
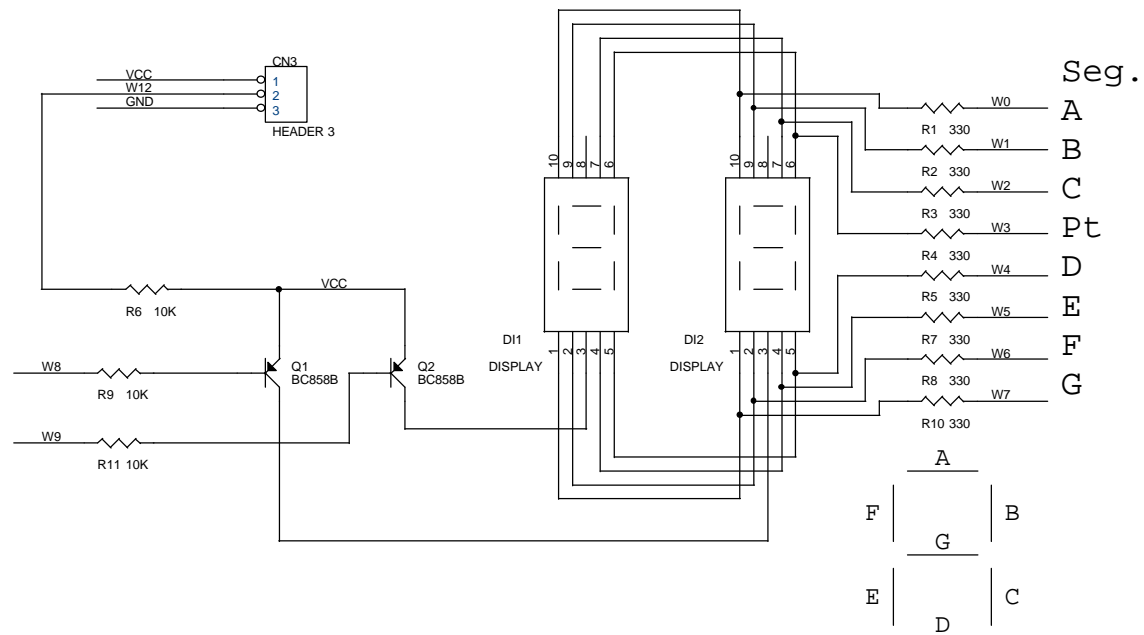
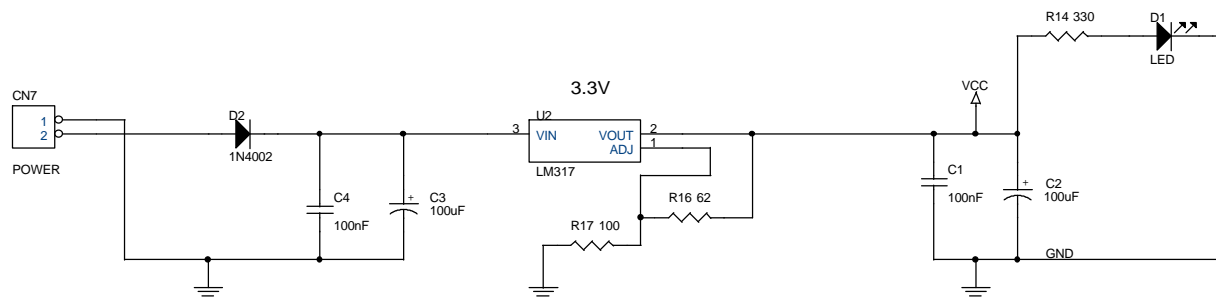
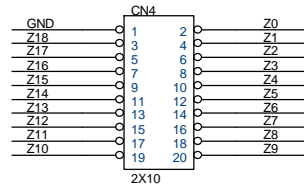
Módulo AEE3501  
CPLD CoolRunner

Módulo AEE3701  
MSP430F149

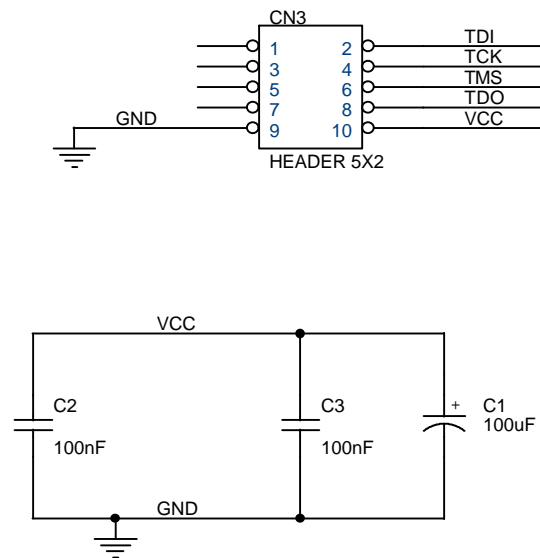
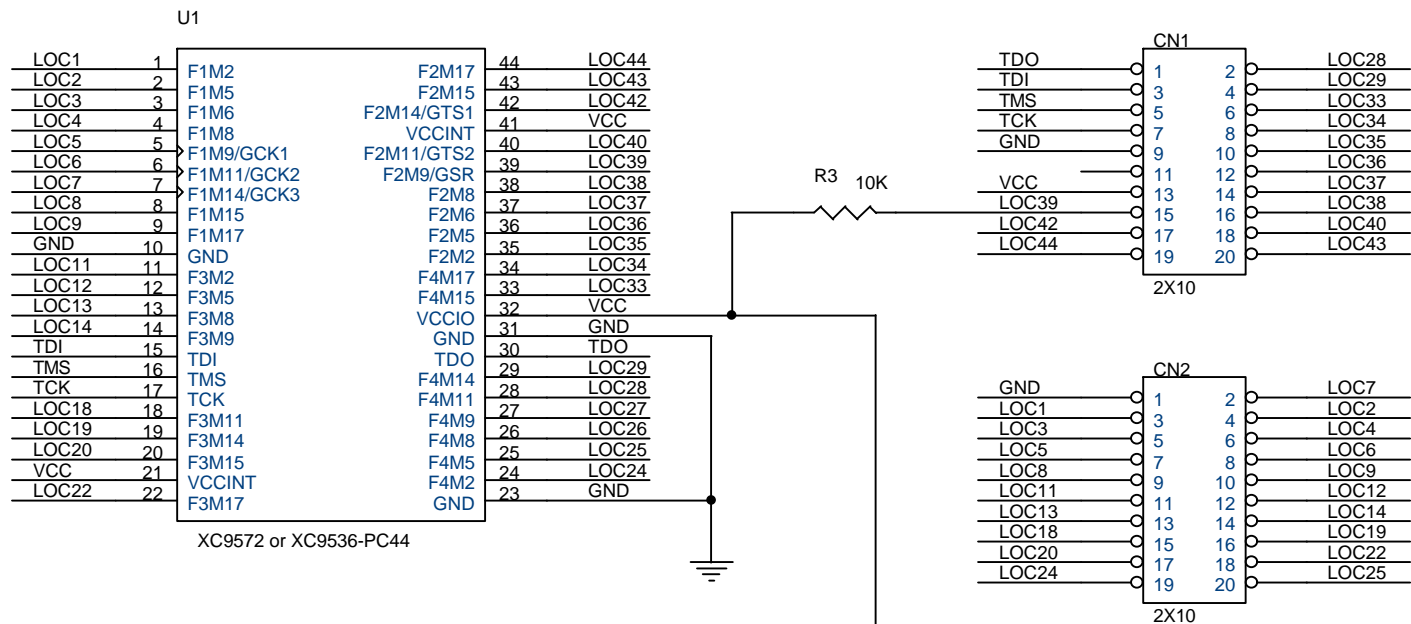
Módulo AEE3601  
FPGA Spartan-II

Ao plugar qualquer dos módulos na base (AEE3101)  
os sinais dos conectores da base ficam ligados aos  
sinais do respectivo módulo como segue:  
AEE 3101 CN2 -> CN1 dos demais módulos e CN2 do AEE3701  
AEE 3101 CN4 -> CN2 dos demais módulos e CN4 do AEE3701

Os nomes dos sinais nos conectores dos módulos correspondem  
aos números dos pinos dos dispositivos. Este números  
podem ser usados ao editar os "constraints" no WebPACK.



Title			
TEST BENCH			
Size	Document Number		Rev
B	AEE3101		1
Date:	Saturday, March 16, 2002	Sheet	1 of 1



Title		
CPLD XC9500XL		
Size	Document Number	Rev
A	AEE3401	1
Date:	Monday, December 03, 2001	Sheet 1 of 1

